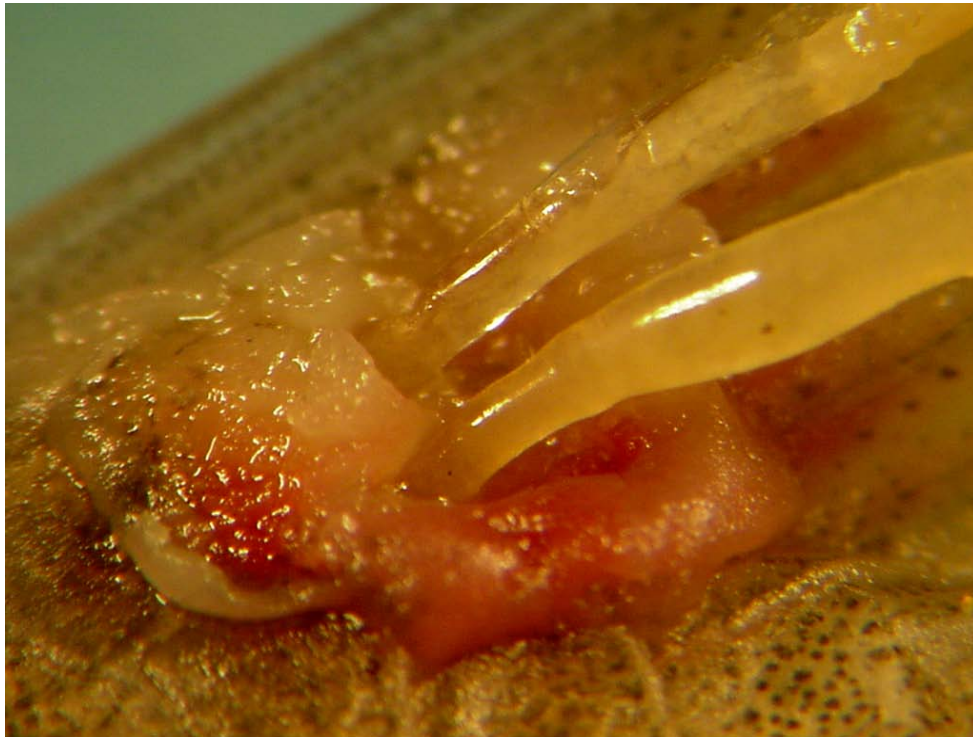
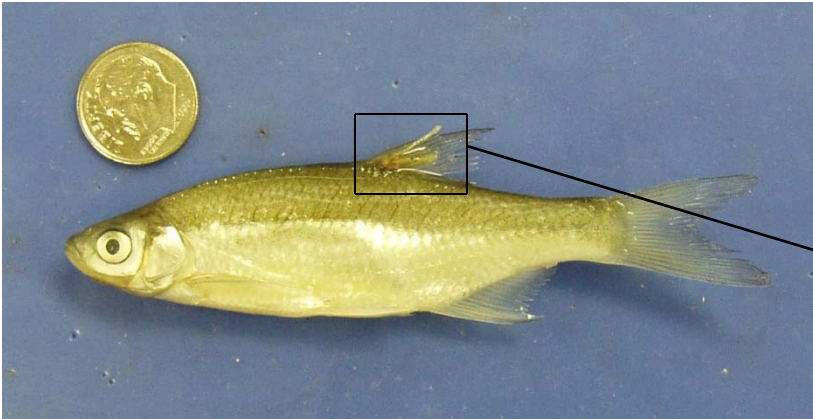


*Lernaea* sp. (the “anchor worm”) from golden shiner (gross pathology).



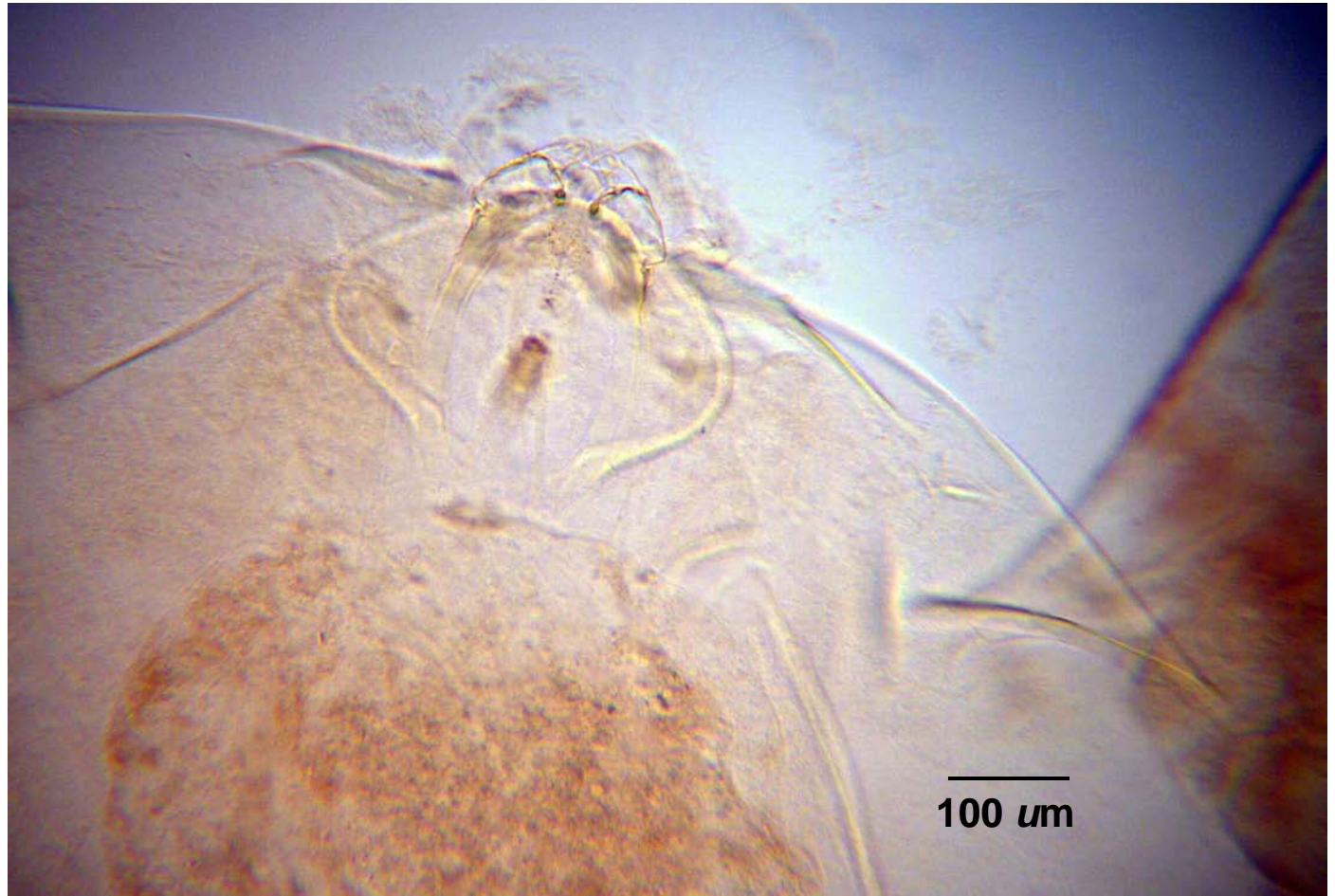
*Lernaea* sp. (Copepoda: Lernaeidae), the “anchor worm.”  
Two microscope slide mounted individuals (entire, without ovisacs);  
each approximately 6 mm in length.



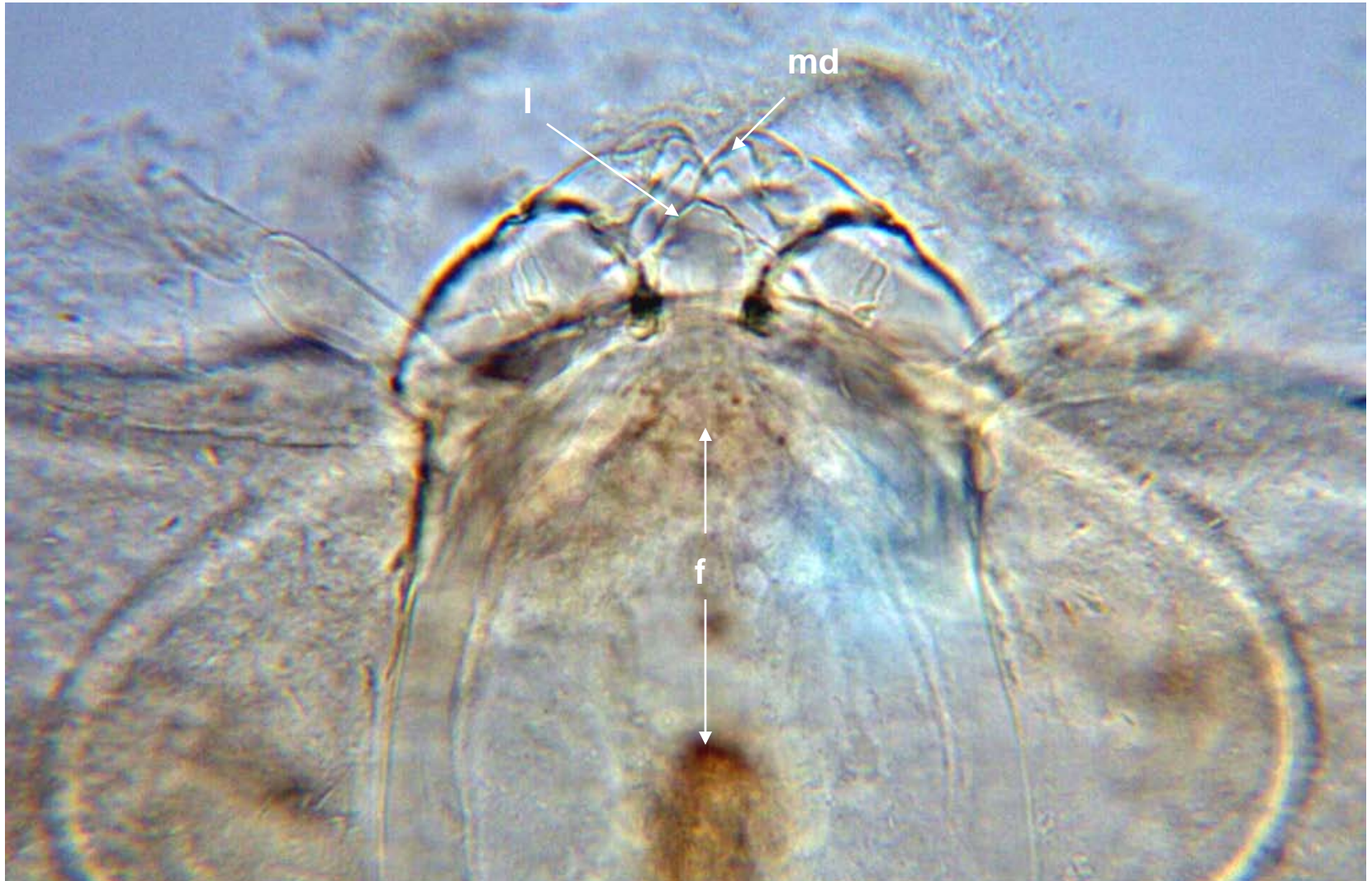




*Lernaea* sp. Box area (left photo) enlarged below.

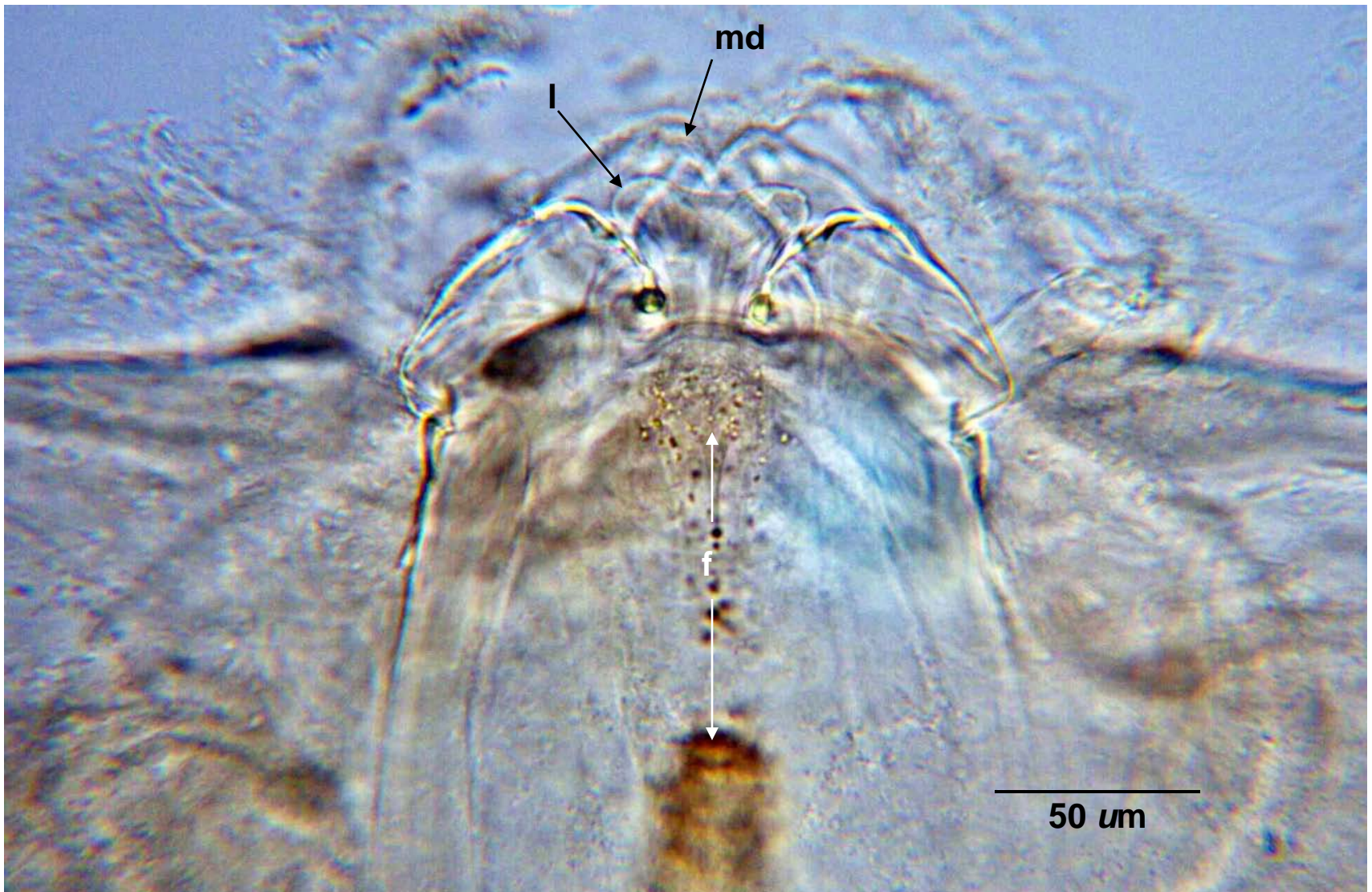


*Lernaea* sp. Legend: f, ingested food; l, labrum; md, mandible.

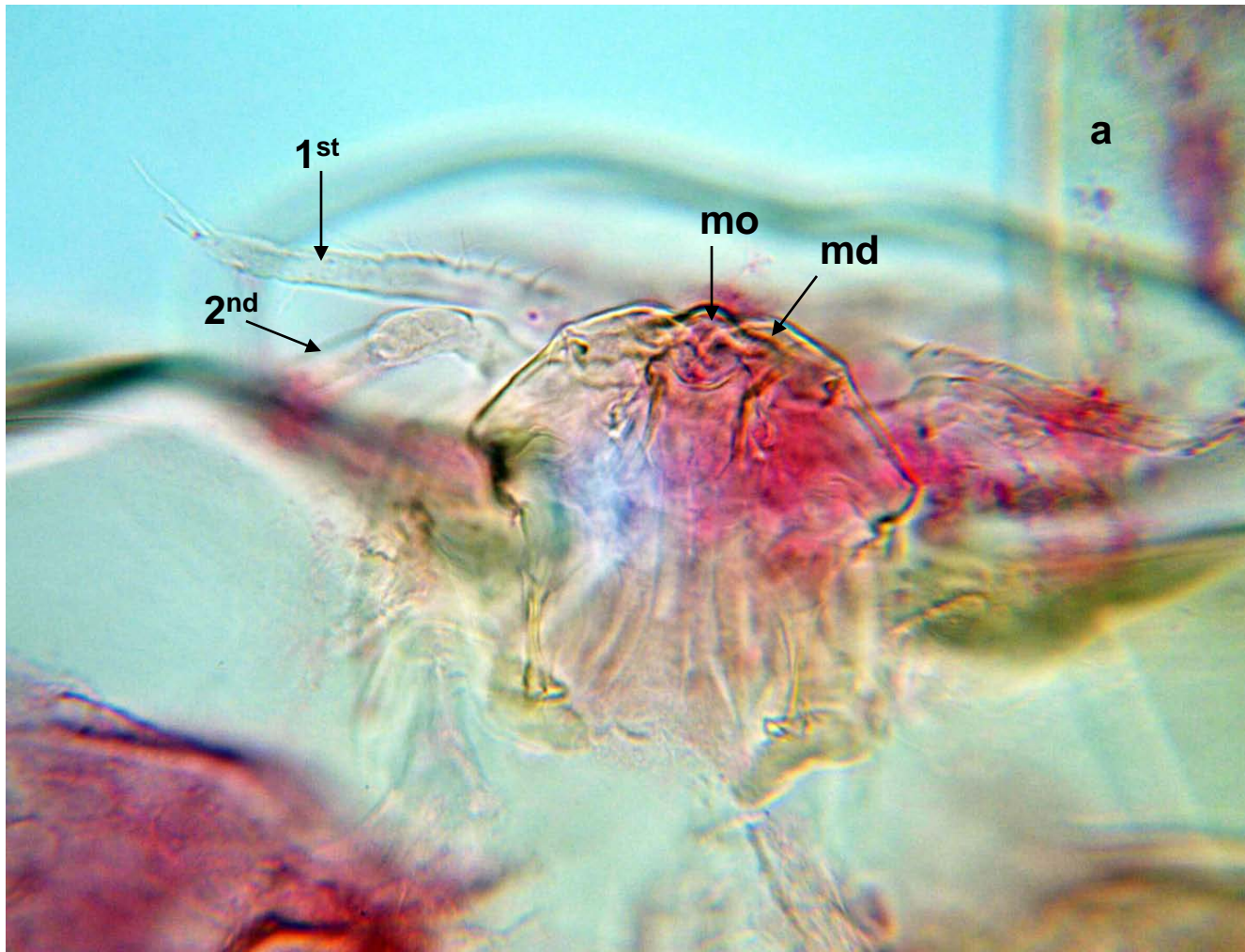




*Lernaea* sp. Legend: f, ingested food; l, labium; md, mandible.

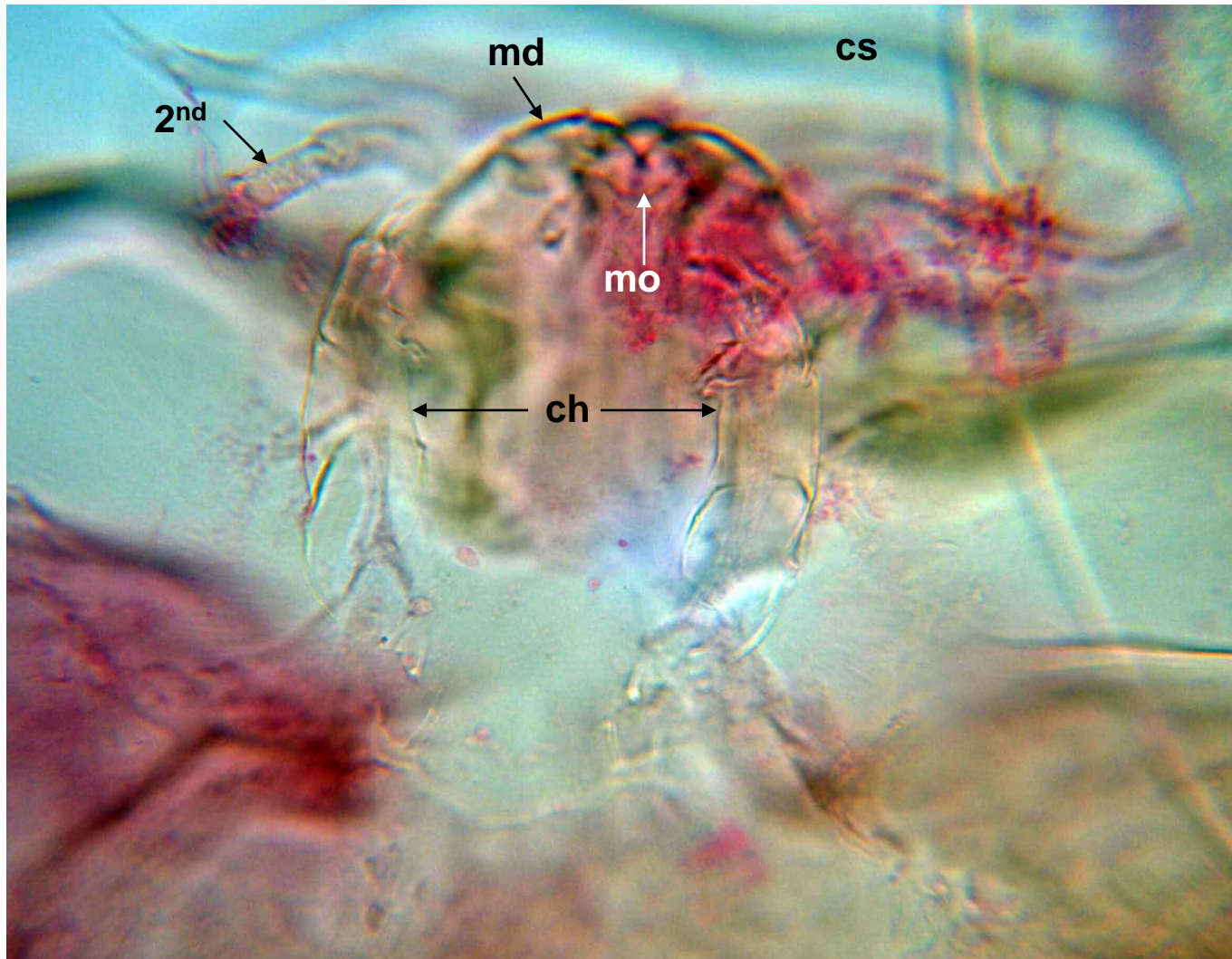


*Lernaea* sp. cephalic structures. Legend: a, anchor; 1<sup>st</sup>, first antenna; 2<sup>nd</sup>, second antenna; md, mandible; mo, mouth.

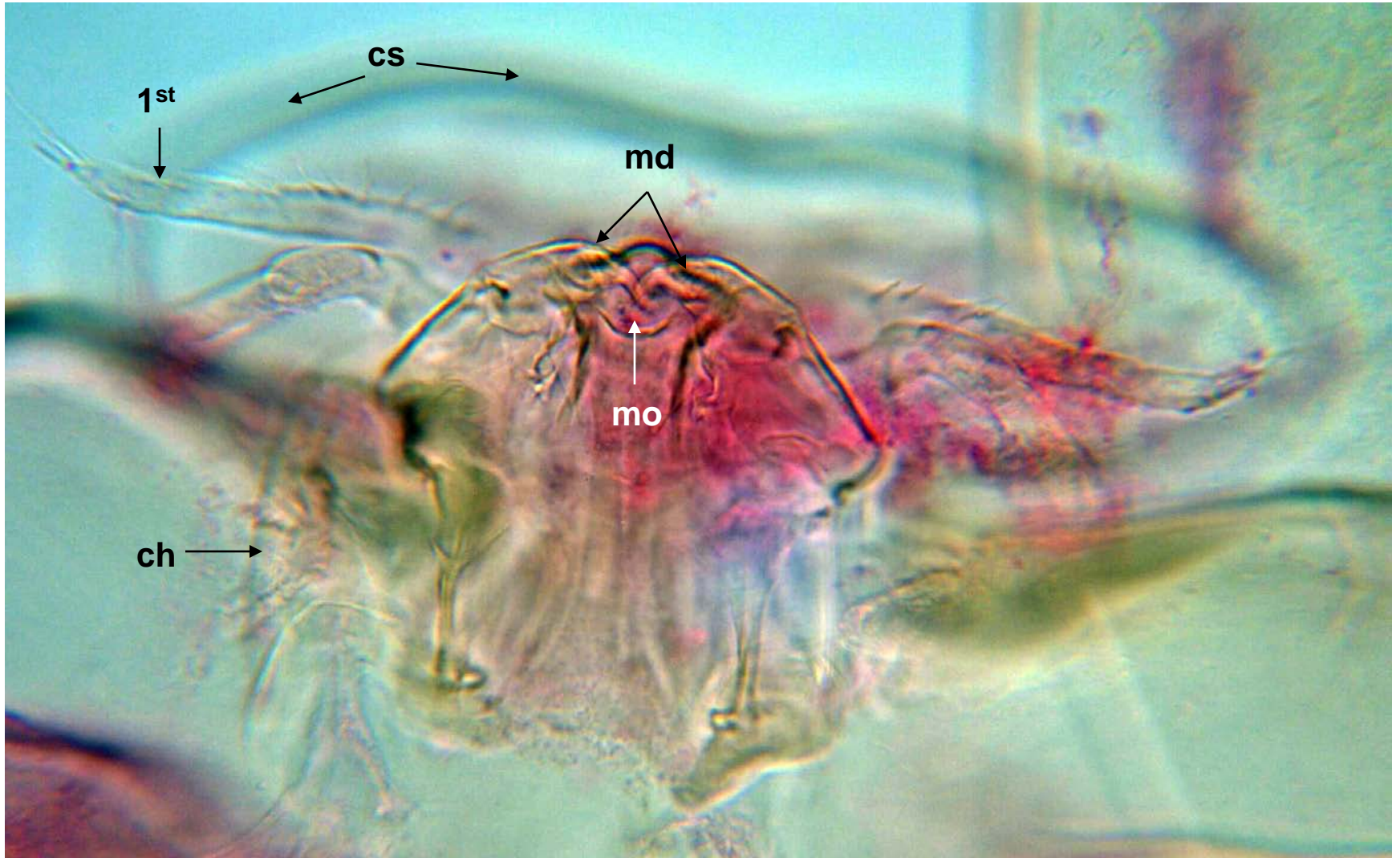




*Lernaea* sp. cephalic structures. Legend: ch, chelicerae; cs, cephalic shield margin (out of focus because it is dorsal and chelicerae are ventral); 2<sup>nd</sup>, second antenna; md, mandible, mo, mouth.

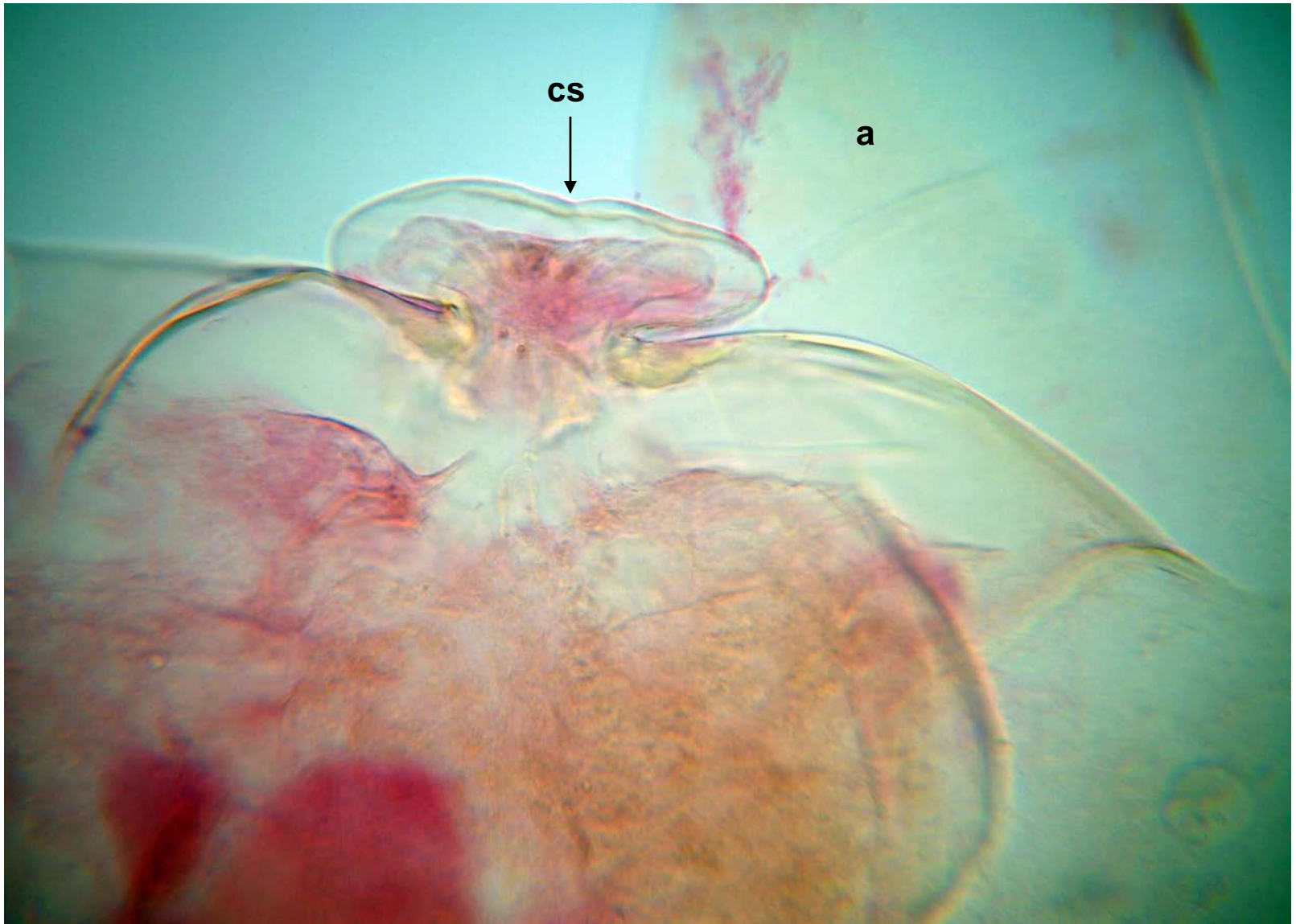


*Lernaea* sp. Legend: 1<sup>st</sup>, first antenna; ch, chelicera; cs, cephalic shield; md, mandibles; mo, mouth.





*Lernaea* sp. cephalic shield (cs), anchor (a). Mouth parts are not in focus, this view.

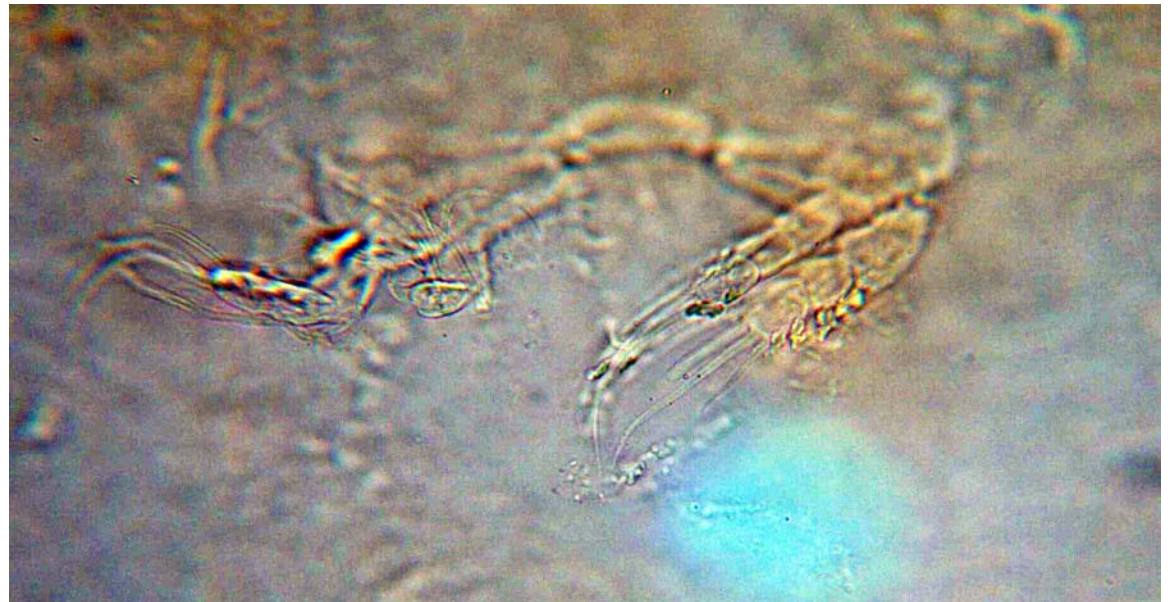


Arrow in A indicates area of appendages shown in B.

**A**



**B**



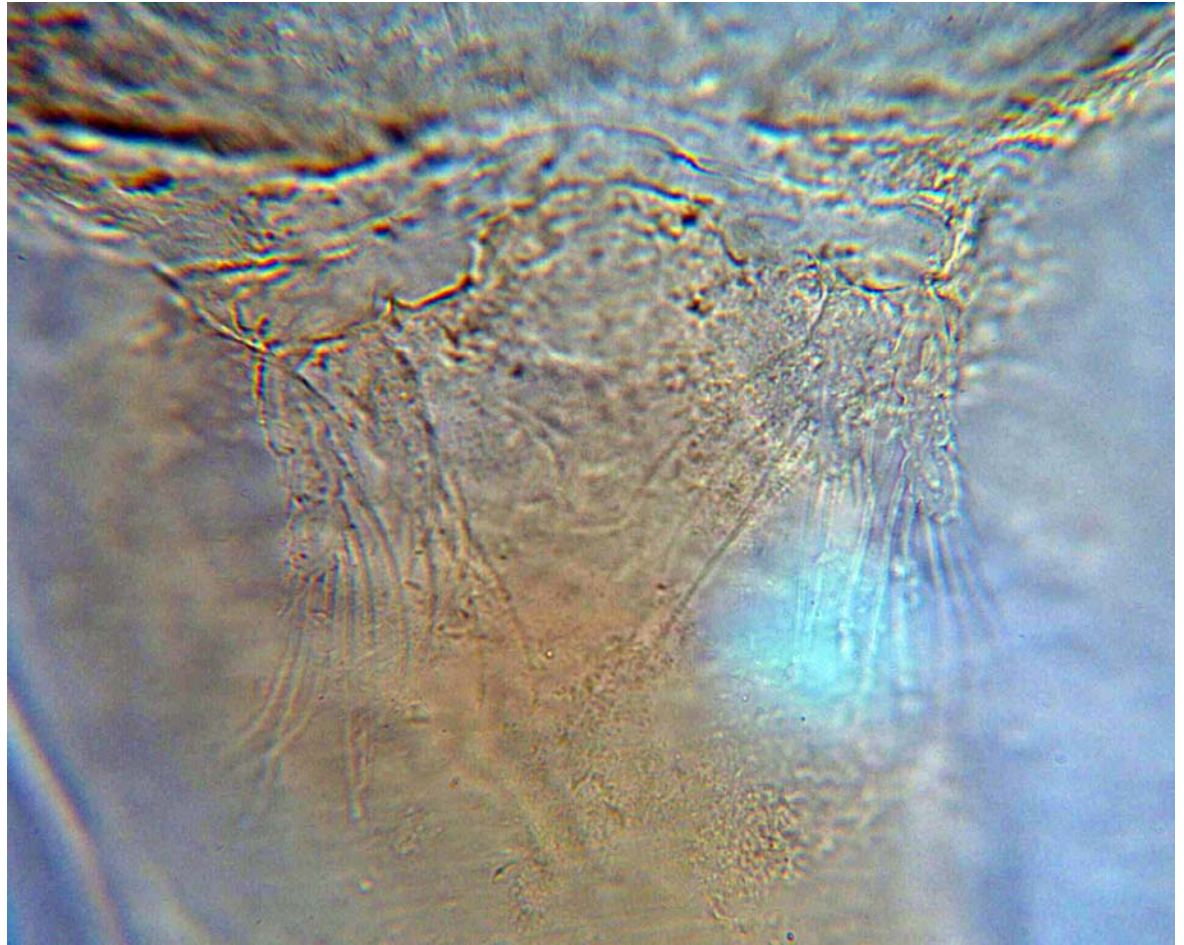


Arrow in A indicates area of appendages shown in B.

**A**



**B**



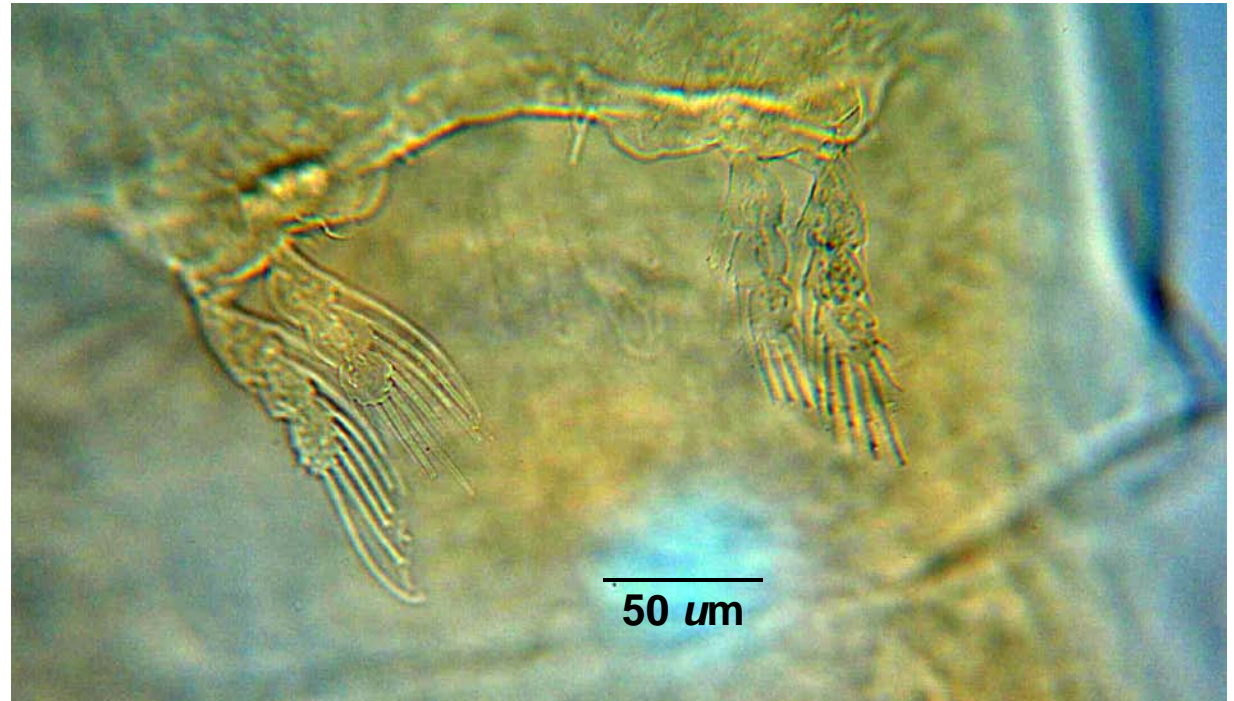


Arrow in A indicates area of appendages shown in B.

**A**



**B**





Arrow in A indicates area of appendages shown in B.

**A**



**B**

